

ISSUE 63  
SUMMER 2024

Thank you for your interest in the Wye Marsh Wildlife Centre. Our Seasonal newsletter, "Marsh Matters," will keep you up-to-date on what is happening at Wye Marsh!

Celebrating World Nature  
Conservation Day July 28th!



Summer is here! Check out  
our upcoming events!



Volunteer Spotlight...  
and more!

MUSIC IN THE MARSH  
OPEN - AIR CONCERT

**SAVE THE DATE!**  
**September 14th 2024, 7-9pm**

Wye Marsh is open daily at 9:00AM. Our Trail Systems close at 4:30PM and the Visitor Centre at 5:00PM.



16160 Highway 12 East, Midland, ON L4R 1K6



705-526-7809



info@wyemarsh.com



wyemarsh.com



wyemarshwildlifecentre



wyemarsh





## A MESSAGE FROM THE EXECUTIVE DIRECTOR

Welcome to summer at Wye Marsh!

The pace sure picks up at this time of year – and we love every second of it! Out in the marsh the birds are active with nests and little ones; the turtles are laying eggs faster than we can put down nest cages; the water lilies are blooming; and the frogs are making their voices heard.

And of course summer brings summer students! We are grateful to Canada Summer Jobs and Métis Nation of Ontario for their financial assistance. By the end of June our full-time staff of nine will be joined by five Outdoor Educators, two Environmental Technicians, an Animal Care Technician, a Front Desk Assistant, and a Facilities Assistant, as well as eight daycamp counsellors. We are also grateful to the Rotary Club of Midland for helping us to provide uniforms for our summer staff, as well as equipment for programs and camp.

This month we are excited to announce two new full-time members of staff have joined our team – Stewardship & Conservation manager Craig Pezik, and Marketing & Customer Service Manager Christy Pauzé both started with us in May. You can learn more about both Craig and Christy elsewhere in this newsletter.

If you have been onsite this spring, you may have had an opportunity to admire our two new canoes – beautiful 8-person Clippers – for which the funding was generously supplied by the German Canadian Club and a private donation in 2023. We will be using them for public canoeing weekends in June, and seven days a week in July and August. These are the first new canoes Wye Marsh has purchased in decades! We are grateful to those who allowed us to make this investment in our public programming.

We look forward to seeing you at Wye Marsh this summer!

Kim Hacker, Executive Director

## A MESSAGE FROM THE PRESIDENT OF THE BOARD OF DIRECTORS

Rumour has it, and one I hope we do not have to whisper about to each other, that summer is upon us! I was going to say summer was going to 'spring' upon us, only because spring seems to have been enjoying being here so much it does not wish to relinquish its space. As interestingly and lovely as spring has been, generally, it is time to go.

But spring did bring us so much in the way of returning joys of nature. Turtles hatching and out and about, the ospreys back in their nest, woodpeckers hammering away, the occasional sighting of white tail deer, wild turkeys roaming, otters, geese, ducks and so much more.

There will be so much to do during the summer here at the marsh. Guided canoe or kayak tours, meet the critter events, birds of prey shows, and many other special events.

And speaking of the birds of prey, we are in the final planning stages of preparing to renovate the large bird enclosure, a project to provide our feathered friends with more comfortable accommodation, and a building that will stand for a good length of time. Any donation you can make to assist us with this project is greatly appreciated.

I cannot forget to thank the Wye Marsh staff and volunteers for their dedication and passion for maintaining this piece of natural conservancy.

Rick Brady,  
President, Friends of Wye Marsh





## Craig Pezik



### Stewardship & Conservation Manager

You may not have had the chance to meet our new Stewardship & Conservation Manager Craig Pezik, as he is spending a lot of his time in the field these days!

Craig comes to us with a background in math and Business Administration, as well as Fish & Wildlife Technologist qualifications. He has previously worked as an Intermediate Biologist with Parsons, an instructor at Sir Sandford Fleming College, and as an environmental consultant.

Craig has also faced a steep learning curve, starting on the same day as his two summer students, and having to get up to speed on a wide variety of projects including invasive species removal; tree, shrub and wildflower planting; bird, bat, turtle and snake surveys; proposed trail upgrades and so much more!

Welcome to Wye Marsh, Craig!

## Christy Pauzé



### Marketing & Customer Service Manager

If you have been to Wye Marsh recently, you might have met Christy Pauzé – our new Marketing & Customer Service Manager.

Christy hit the ground running, starting with us just before the long weekend in May. She will be responsible for the front desk and gift shop, and taking on our social media, as well as marketing and other communications (including newsletters like this one!)

Christy has a background in graphic design, and before joining us full-time, she designed our new updated logo, Land Acknowledgement sign, and seasonal children's activity booklets! She is also a talented photographer – you may have seen her out and about taking photos.

Please feel free to introduce yourself to Christy the next time you visit Wye Marsh!



## MEET SCARLET The Red-tailed Hawk

Scarlet the Red-tailed hawk came to the Wye Marsh in 2020 after she was struck by a vehicle causing permanent damage to her right eye. This impacts her ability to judge depth, making it impossible for her to hunt for herself in the wild. Hawks typically have incredible vision and can see seven to eight times better than humans. They are even able to see a mouse from over 30 meters away!

Scarlet is a very docile bird who loves to fly and preen her handler's hair. She has been adopted by Fae and Sophie. Thank you to everyone for your continued support of the Wye Marsh and our beautiful animal ambassadors.



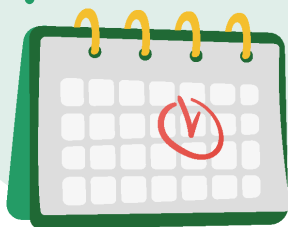


# MARSH MATTERS NEWSLETTER

ISSUE 63  
SUMMER 2024

## DAYS TO CELEBRATE & COMMEMORATE

MARK YOUR  
CALENDARS!



**Eagle Day**

June 20th

**World Snake Day**

July 16th

**World Nature Conservation Day**

July 28th

**International Owl Awareness Day**

August 4th

**International Wolf Day**

August 13th

**World Photo Day**

August 19th

**Culture Awareness Day**

September 7th

**Water Monitoring Day**

September 18th

## WHAT'S HAPPENING AT THE WYE MARSH THIS SUMMER



EMBROIDER  
A MOTH:  
BEGINNER  
WORKSHOP

**Sunday, June 30, 10 am - 12 noon**

Let your fingers flutter with thread over linen to reveal a symbol of transformation. Welcome the new season, and embrace change in life. Embroider one of three designs in this two-hour workshop. Take home your mounted creation and display with pride. No experience needed. All materials included.

**\$40 + HST per person. Ages 12+**

**Registration required at <https://www.wyemarsh.com/spring-events>**



FASCINATING  
FUNGI  
WORKSHOP

**Sunday, June 30, 1:30 - 3:30pm**

Dead Man's Fingers? Jelly Club Coral? Turkey Tails? Some decomposers have such dramatic names! Join us for this two-hour guided tour to see which spectacular (and sometimes poisonous) seasonal fungi are growing at Wye Marsh this month. Bring bug spray, wear rubber boots, and dress for the weather!

**\$25 + HST per person. Ages 12+**

**Please Register at <https://www.wyemarsh.com/spring-events>**



POISON PIE,  
OTHER FUNGI  
& PARASITIC  
PLANTS

**Sunday, August 11, 1:30 - 3:30 pm**

Black Witch's Butter? Devil's Urn? Deadly Galerina and Poison Pie? Join us for a fascinating 2 hour workshop, shining the spotlight on deadly sac fungi, jelly fungi, gilled mushrooms, slime molds and parasitic plants growing at Wye Marsh. Learn about their ecological roles, and the incredible communication networks they form. Enjoy a guided tour and make your own "spore print" to take home!

**\$25 + HST per person. Ages 12 +**

**Please register at: [www.wyemarsh.com/Summer-Events](https://www.wyemarsh.com/Summer-Events)**



FLUID ACRYLICS  
WORKSHOP

**Saturday, September 14, 2024, 1-3 pm**

Find out why so many artists love working in acrylics! These wonderfully mixable, movable, fast-drying paints are ideal for creative experiments inspired by nature. Join Lisa Harpell for this introductory session. All materials are provided, and no experience is necessary.

**\$65 + HST per person. Ages 14+**

**Sign up at: [www.wyemarsh.com/art-in-the-marsh](https://www.wyemarsh.com/art-in-the-marsh)**





## WEEK DAY PROGRAMMING STARTING!



### GUIDED KAYAK TOURS

Join our Naturalist on a 1.5 hour guided kayak tour and discover wildlife amongst the water lillies and cattails. Must be at least 8 years of age. Please sign up upon your arrival. Admission+10+HST / person.



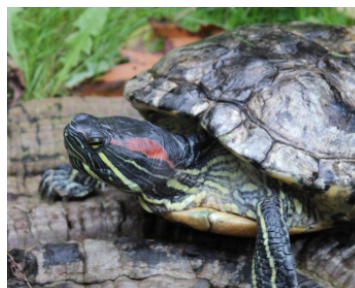
### GUIDED CANOE TOURS

Join our Naturalists on a 1 hour guided voyageur-style canoe tour of the Marsh channels. Tours are first come, first serve basis - no preregistration. Please sign up upon your arrival. Admission+\$8+HST/person.



### MEET THE NATURALIST

Join one of our Naturalists to enjoy one of their favorite Wye Marsh activities! Meet at the Visitor Centre, tours are subject to change. Free with admission.



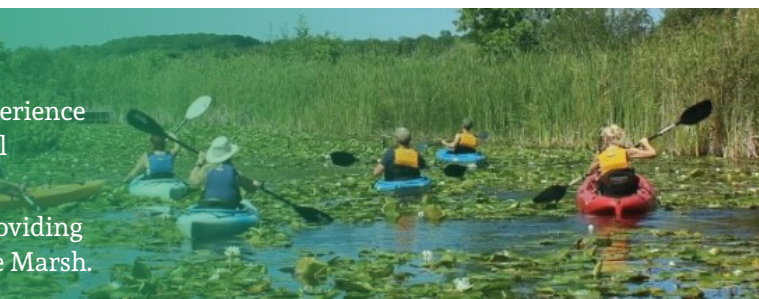
### FEATURE CREATURE

Meet some of our Animal Ambassadors. Learn about their personalities, favourite foods, natural habitats, and much more at a demonstration.

### PRIVATE ECOTOURS

Book a private three-hour guided tour, for a unique outdoor experience that fits your schedule and interests. Please note - some physical endurance required.

We will take you well beyond the limits of our walking trails, providing you with the best opportunity to fully explore the beauty of Wye Marsh.



## VOLUNTEERS MAKE ALL THE DIFFERENCE AT THE WYE MARSH!

As we kick off another summer season at Wye Marsh, we are extremely grateful to our wonderful volunteers.

Everyone involved with our Habitat Restoration Days is having a direct impact on the health and quality of Wye Marsh, while our Trumpeter Swan and other Wildlife Monitors collect data shaping our stewardship and conservation management program.

The beautiful pollinator patch in front of the Visitors Centre is cared for by the Wildflower Gardeners, promoting healthy green spaces by showcase native species.

Our Front Desk Team greets everyone warmly, and our Trail Ambassadors fuel a passion for nature among all our guests. Our Firekeepers and Canoe Paddlers enhance visitor experiences, and our BINGO volunteers help keep our Birds of Prey fed.

The Summer Camp "Counselors-in-Training" keep little ones safe as they explore the mysteries of the marsh together. And our dynamic Outreach Team connects with the community, inviting everyone to come escape-explore-experience Wye Marsh.

From our Board of Directors to Special Events Team, and everything in between - whatever role they embraced - our volunteers are making a difference at Wye Marsh. For that we give thanks!







## VOLUNTEER SPOTLIGHT

### Fabian Ladouceur

Fabian Ladouceur was shocked when he realized that he has been volunteering at Wye Marsh for 18 years!

In that time he has made people smile by dressing up as a clown, pioneer, Honey Nut Cheerios Bee, tree, and wolf at various special events. He loves Wye Marsh - and loves to help us out in many ways!

"I like nature," says Fabian, and he appreciates the chance to see wildlife in its natural habitat.

"Nature is not just our home but belongs to the wildlife, too" he says. "We're kind of invading their territory. It is our job to try to protect the land."

As an avid photographer and wildlife enthusiast, Fabian enjoys walking the trails, recording life all around him. He is very proud of his Otter and Osprey photos, and is currently helping us build our photo library at Wye Marsh.

We also appreciate Fabian's calm, polite presence in our parking lot on busy days. You might have noticed him, as his brightly coloured safety gear sets him apart. "I've been volunteering in the parking lot since day one", he says. "It's the only time I get to tell people where to park, respectfully," he laughs.

He has also served as the equivalent of a "walking flashlight" at Music in the Marsh, which he says he is keen to do again.

When asked what makes him smile about Wye Marsh, he is quick to say the wildlife and Staff.

"I'm learning new things every single day," he says.

"Sure. You can go on the web to learn about animals," says Fabian, "Or you can get out of the house, talk to people who can give you full details... ask questions. I love it" he says. "There's always something different." And with camera in hand, here's ready to appreciate the dynamic changes each season brings.



## WYE MARSH HALLOWEEN COSTUMES WANTED

Let your old Halloween costumes generate smiles at Wye Marsh.

We have a snail, bat, ladybugs, mushrooms, and an owl. Do you have any costumes of native species? For example, a bear, deer, fox or family-friendly adult rabbit would be wonderful additions to our collection.

Please contact Heather at 705-526-7809 ext 217 to make a donation.

**Thank you!**







# MUSIC THE MARSH

## OPEN - AIR CONCERT

September 14, 2024      7 - 9 pm      \$30 "All In"

**Burrison  
Hudani  
Doris LLP**

*Alexandra Seaton  
& Paddy Hanlon*

Let the sweet sounds of acoustic guitars, soft rock ballads, and country melodies escort you along the trails for a magical evening at Wye Marsh.

Funds raised support trail maintenance, conservation projects and environmental education programs at Wye Marsh!



**Scotia Wealth Management.**

Online Tickets at: [www.wyemarsh.com/music-in-the-marsh](http://www.wyemarsh.com/music-in-the-marsh)





## HABITAT RESTORATION ACTION DAYS



As pretty as some exotic plants look, they can have devastating impacts on our local environment!

Help restore wildlife habitat at Wye Marsh.

Learn how to safely remove invasive plants from the area.

Join us for just two hours on any of the days listed below - and you will make a difference!

**Registration preferred. Drop-ins are welcome. Please call Craig 705-526-7809 ext. 205, or email [cpezik@wyemarsh.com](mailto:cpezik@wyemarsh.com).**

If possible, bring your gardening gloves, drinking water and bug spray.

Garlic Mustard, Periwinkle, Spotted Knapweed and Phragmites Dates:

**Saturdays from 9 - 11 am**

- |             |             |
|-------------|-------------|
| • June 22nd | • July 20th |
| • July 6th  | • July 27th |
| • July 13th |             |



### Periwinkle

It is native to the Mediterranean basin and was introduced to North America as an ornamental plant. It easily escapes cultivation and is considered highly invasive. Periwinkle poses a threat to biodiversity because it spreads over large areas and competes with native plant species in a number of habitats. Periwinkle is still sold at some plant nurseries, so this is an existing source contributing to the invasion of this plant across the province.



### Garlic Mustard

It is a herb native to Europe that was brought to North America in the early 1800s for use as an edible herb. Since its arrival in North America it has escaped into the wild and is now one of Ontario's most aggressive forest invaders. Garlic mustard can invade relatively undisturbed forests. Once established it can displace native wildflowers like trilliums. It hinders other plants by interfering with the growth of fungi that bring nutrients to the roots of the plants.



### Spotted Knapweed

It was accidentally introduced into North America from Western, Central and Eastern Europe in the later 1800s in contaminated alfalfa and clover seed and in soil used for ship ballast. Before it was considered a serious weed, it was spread in domestic hay and through human activities. It is a highly competitive weed that invades disturbed areas and degrades native plant communities.



### Phragmites

While native Phragmites are a natural part of our local ecosystem, the Eurasian form is not. Alien to our wetland, it grows in tall tight stands that are destroying vital turtle habitat at Wye Marsh. Help our turtles. Become a Phragmites Fighter!



# WYE MARSH TRAILS SYSTEM

16160 Highway 12 East, Tay, ON (705) 526-7809



## LEGEND

Hiking Trails



Boardwalk



Marsh March



1.9km

(Wheelchair & stroller accessible friendly)

Hardwood & Return Trail

0.4 km

Muskrat Loop

1.6 km

Woodland Trail

1.5 km

Beaver Trail

1.0 km

Arboretum Trail

0.6 km

I.D. Trails



0.9 km

Snowshoe Trails



Service Road



TRAILS CLOSE Nov-April at 4:00 PM

TRAILS CLOSE May-Oct at 4:30 PM

GATES LOCK AT 5:00PM

1 Visitor's Centre

3 Sugar Shack

5 Canoe Dock

7 Kayak Dock

2 Birds of Prey Field

4 Log Cabin

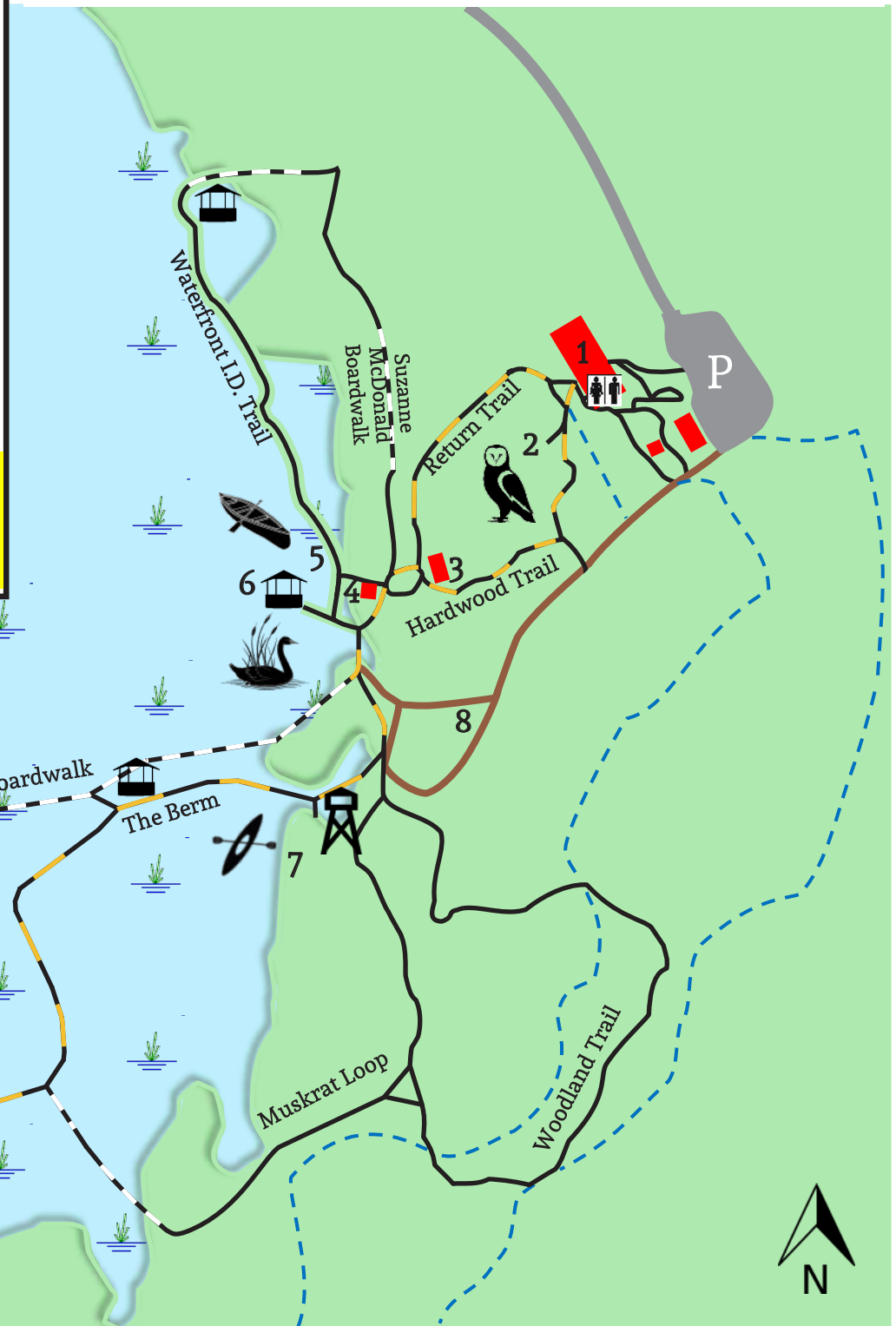
6 Waterfowl Monitoring Station

8 Tenting Field

Open Land/Forest

Wetland

Building



Please use caution on all trails, walkways, boardwalks, waterways and property of the Wye Marsh. Appropriate hiking footwear is recommended. Slippery conditions exist when wet. Be aware that plant roots and loose rocks can create natural trip hazards when extending above paths. Immediately return to the Visitor's Centre if foul weather occurs.