

ISSUE 67
SUMMER 2025

Thank you for your interest in the Wye Marsh Wildlife Centre. Our Seasonal newsletter, "Marsh Matters," will keep you up-to-date on what is happening at Wye Marsh!

Sedges Workshop with
David Hawke: What they
reveal about the landscape
and why we care



Summer is here! Check out
our upcoming events!



Meet Hans..
and more!



JOIN US FOR CANOE TOUR & FIRE

Running every Friday starting June 6th
till August 29th | 7:30-9:30pm

Wye Marsh is open daily at 9:00AM. Our Trail Systems close at 4:30PM and the Visitor Centre at 5:00PM.



16160 Highway 12 East, Midland, ON L4R 1K6



705-526-7809



info@wyemarsh.com



wyemarsh.com



wyemarshwildlifecentre



wyemarsh



A MESSAGE FROM the President of the Board of Directors

“It’s summer and time for wandering.” (Kellie Elmore)

What great words indeed. Yes all, it is time for wandering the great walking trails here at Wye Marsh. And the sights one can see range from the Ospreys, the Bald Eagles flying up and about, the turtles, frogs, beaver, muskrat, ducks, geese, woodpeckers, hawks, owls and yes even snakes! (Non-poisonous don’t you know.) We have also been pleased to occasionally see wild turkeys, and deer. Just fantastic what one can see while moving through the property.

We have managed to get through quite the interesting weather patterns, and we can take comfort in knowing we live in a natural world, one we need to respect and do our best to take care of as best we can.

And that is one thing the staff and volunteers here at the Wye Marsh work hard to do – watching out for and providing care to our natural grounds and waterways.

Our marvellous and beautiful birds of prey have moved in to their new home, and they look forward to your coming and visiting them. Remember to be mindful of their comfort levels by not going up to the screenings of their enclosures or climbing over the protective railing. And if perchance one of them becomes a tad agitated by your presence, nothing personal! Please just back off a bit.

As quoted above, the Wye Marsh is a place to wander, and a place where you can Meet the Naturalist, participate in a canoe or kayak tour, or enjoy a “Feature Creature”. Keep an eye out for the return of the Birds of Prey shows, always a treat. And as always, heading out for a peaceful walk along the trails provides great sustenance to our minds and bodies.

A heartfelt thank you to our fabulous members! Your support and dedication to the Wye Marsh is important and means so much! If you have any thoughts, ideas or suggestions to help us improve the experiences here at the marsh, please do not hesitate to speak with any of our staff.

Rick Brady,
President, Friends of Wye Marsh





A Message from the Executive Director

Hello members, volunteers, supporters, and all friends of the Wye Marsh.

We've made it! What was a long and trying winter is behind us, and the marsh has sprung to life over recent weeks, not only in terms of the countless incredible bird and other wildlife species that call these forests and wetlands home, but also of the eager smiling faces walking through our doors each day. People of all ages, from various walks of life, and visiting for very different reasons are what truly make the Wye Marsh a special place, and we couldn't be happier to welcome them each day.

As you know, our environment is constantly under threat. Proposed legislation such as Bill 5, which, if passed, will weaken protection of endangered species habitats in Ontario, threatens to have a lasting impact on the wildlife we see here each and every day. It is up to all of us to help manage the balance between protecting our environment and providing each member of society with the means to live a happy, healthy, and productive life. The ideas of economic growth and environmental stewardship are not mutually exclusive, and we all must recognize our role in ensuring that these priorities can happen alongside of one another as opposed to in spite of one another.

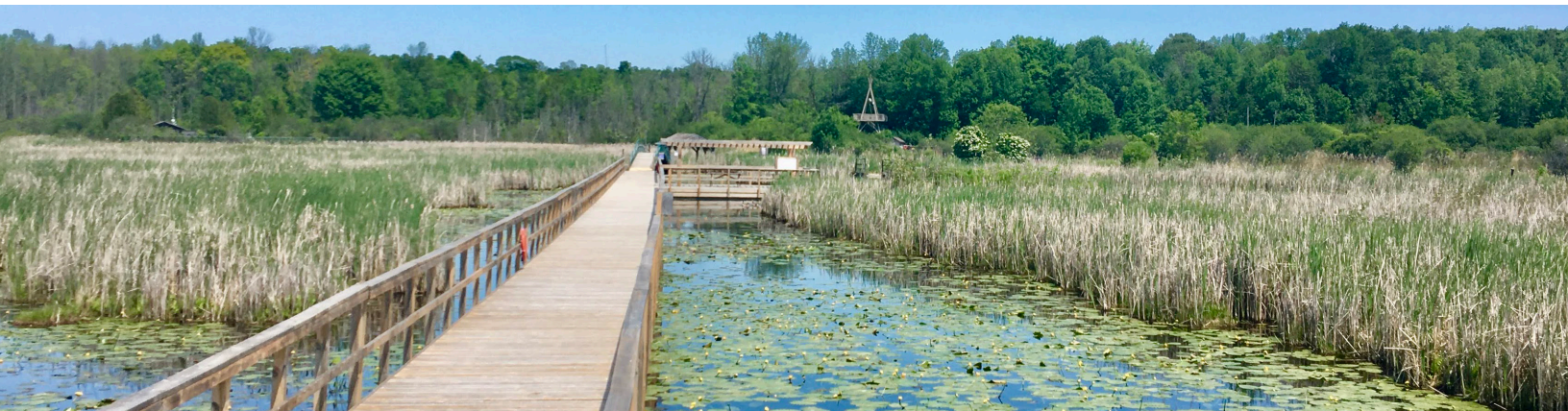
This is why I am encouraged and inspired by our visitors each day, and in particular, the youngest cohort, who arrive with big smiles, wide eyes, and enough noise and laughter to cause alarm among every bird watcher in the marsh. Because it is those children whose excitement is not limited to the rarest bird or turtle sighting, but to each and every sighting instead, be it a Sandhill Crane or a Canada Goose, that remind us of just how important places like this are. And they remind us how willing people are to truly embrace a love of nature if given the opportunity to explore. If we all took the time to enjoy nature the way our youngest visitors do, we may very well be taking the most important steps we can to ensure it is still here for them when they grow up.

This season, be it just once, or once every day or two, come visit us at the marsh. And when you're here, try to enjoy it through those same wide and eager eyes as a child. Enjoy it the way you did in your youth on a class trip, or an overnight scouts excursion, or a birthday party, where your main objective was just to be here in this moment making the most of your day in nature. If we could all take the time to do that here and there, maybe there would be no one left in need of convincing that nature is worth protecting.

Looking forward to seeing you here this summer.

All the best,

Eric



MUSIC FOR THE MARSH

OPEN-AIR CONCERT

SAVE THE DATE!

September 13th, 2025

Watch for more details on our Facebook and Website!





VOLUNTEER SPOTLIGHT

Hayley Dunn

Our Wye Marsh volunteers are awesome. Each one invests their own time, talent, and skills in our success, for which we are grateful. This past winter, we were happy to have Hayley Dunn volunteering with us – years after finishing hours for high school.

Hayley joined us in 2022, as a Summer Camp Counsellor in Training (CIT). She remembers it being a blast. The camp kids were always full of surprises, really fun and creative. “They made up their own dances for the talent show and everyone would join in.” She enjoyed their sense of community so much, she started taking on new roles as a youth volunteer at Wye Marsh.

On Front Desk and at special events, Hayley has had the chance to connect with visitors and share smiles with complete strangers talking about their experiences on the trails. “You get to know people,” she says, “and talk to people you normally wouldn’t. It feels inclusive.”

One of the highlights of volunteering this year came when she had the chance to hold Ginger at our Sweetwater Harvest Festival. At first, Hayley felt nervous holding her, “but she was so soft.” “I was so excited and happy to learn about her and teach people about her!”

Now it’s time for Hayley to learn more about the web of life. She’s off to Nova Scotia to study Marine Biology at Dalhousie University. “I love the ocean,” she says, radiating excitement. She’s fascinated by the amount of biodiversity in the reefs and the deep ocean. “I think it’s beautiful: All that LIFE!”

We wish Hayley all the best as she sets out on a new adventure, swimming in the world of academia, exploring other ecosystems, and studying precious life forms as we do our best to protect the health and quality of Wye Marsh for our local species at risk.

As people come and go, leaving their mark with us, we continue to be part of a dynamic, caring global community, connected by our love of nature. For this we are grateful to Hayley and all of our volunteers.



GLOBAL BIG DAY!

Wye Marsh continues to be a hot spot for birders, and we thought you would like to know that more than 90 species were counted on Global Big Day!

We were also very happy to hear that 23 families took part in our introductory Birding hikes, which means there may be more to add to our team next year.

Some Bird Surveyors saw a:

Sandhill Crane, Double-crested Cormorant, Blue-winged Teal, Pied-billed Grebe, Broad-winged Hawk, and a Bald Eagle sitting on a nest!



Thank you for being part of
Global Big Day at Wye Marsh.
See you next year!



Snapping Turtle Released Back Into Wye Marsh!

May 16, 2025 – Wye Marsh Wildlife Centre

A large snapping turtle has made its way back home to the Wye Marsh after nearly a year of recovery. Last summer, this resilient reptile was found injured within the marsh. Thanks to a remarkable network of care and dedication, it has now returned to the wetland where it belongs.

The turtle's journey to recovery began with North Simcoe Vets, who provided critical first aid and served as a way station. It was then transferred to the Ontario Turtle Conservation Centre (OTCC) in Peterborough, a facility renowned for its efforts in rehabilitating Ontario's native turtles.

After a winter of healing under expert care, the turtle has regained full health. On Friday, May 16 at 10:00 a.m., staff, volunteers, and visitors gathered to witness the triumphant release of this ancient creature back into the wild.

This successful rescue highlights the importance of partnerships in wildlife conservation. We extend heartfelt thanks to North Simcoe Vets and the dedicated team at Ontario Turtle Conservation Centre (OTCC) for making this release possible.



MEET HANS **Harris' Hawk**

AGE: 16

Hans was originally bred and trained for falconry, but after a few months at the Ontario School of Falconry, it became clear that this career path wasn't the right fit. A smaller-than-average Harris Hawk, with limited coordination, Hans struggled during hunts and was rarely successful.

In 2009, Hans found a new home at the Wye Marsh, where he has since become an integral part of our educational programming. He loves to fly and is regularly featured in our public Birds of Prey demonstrations, held Sundays at 1:00 PM, as well as in our private Raptor Rendezvous experiences.

Hans is also available for symbolic adoption. By adopting Hans, you help support his care throughout the year. To learn more or to adopt Hans, please call 705-526-7809 or email info@wyemarsh.com.



HABITAT RESTORATION ACTION DAYS



As pretty as some exotic plants look, they can have devastating impacts on our local environment!

Help restore wildlife habitat at Wye Marsh.

Learn how to safely remove invasive plants from the area. Join us for just two hours on any of the days listed below - and you will make a difference!

Registration preferred.

Drop-ins are welcome.

Please call Miriam

**705-526-7809 ext. 205, or email
mrobittaille@wyemarsh.com.**

If possible, please bring your gardening gloves, drinking water and bug spray.

Garlic Mustard, Dames Rocket, Spotted Knapweed and Phragmites Dates:

Sundays from 9 - 11 am

- | | |
|-----------|-------------|
| • June 1 | • July 20 |
| • June 8 | • July 27 |
| • June 15 | • August 3 |
| • June 22 | • August 10 |
| • June 29 | • August 17 |
| • July 6 | • August 24 |
| • July 13 | |



Dames Rocket

Introduced to North America in the 1600s by European settlers for its use as an ornamental garden plant. Since then, its prolific seed production has allowed it to colonize a variety of natural areas such as meadows, roadsides and disturbed areas. Once it takes hold in an area, it excludes native species by forming dense monocultures.



Garlic Mustard

An edible herb native to Europe that was brought to North America in the early 1800s. Since its arrival in North America it has escaped into the wild and is now one of Ontario's most aggressive forest invaders. Garlic mustard can invade relatively undisturbed forests. Once established it can displace native wildflowers like Trilliums. It hinders other plants by interfering with the growth of fungi that bring nutrients to the roots of the plants.



Spotted Knapweed

Accidentally introduced into North America from Western, Central and Eastern Europe in the late 1800s in contaminated alfalfa clover seed and soil used for ship ballast. Before it was considered a serious weed, it was spread in domestic hay and through human activities. It is a highly competitive weed that invades disturbed areas and degrades native plant communities.



Phragmites

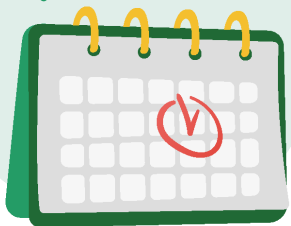
While native Phragmites are a natural part of our local ecosystem, the Eurasian form is not. Alien to our wetland, it grows in tall tight stands that are destroying vital turtle habitat at Wye Marsh. Help our turtles. Become a Phragmites Fighter!



MARSH MATTERS NEWSLETTER

ISSUE 67
SUMMER 2025

**MARK YOUR
CALENDARS!**



DAYS TO CELEBRATE & COMMEMORATE

Eagle Day
June 20th

World Snake Day
July 16th

World Nature Conservation Day
July 28th

International Owl Awareness Day
August 4th

International Wolf Day
August 13th

World Photo Day
August 19th

Vulture Awareness Day
September 6th

Water Monitoring Day
September 18th

SUMMER WEEK DAY PROGRAMING!



GUIDED KAYAK TOURS

Join our Naturalist on a 1.5 hour guided kayak tour and discover wildlife amongst the water lilies and cattails. Must be at least 8 years of age. Please sign up upon your arrival. Admission + \$10+HST / person.



GUIDED CANOE TOURS

Join our Naturalists on a 1-hour guided voyageur-style canoe tour of the marsh channels. Tours are first come, first serve basis - no preregistration. Please sign up upon your arrival. Admission + \$8+HST/person.



MEET THE NATURALIST

Join one of our Naturalists to enjoy one of their favorite Wye Marsh activities! Meet at the Visitor Centre, tours are subject to change. Free with admission.



FEATURE CREATURE

Meet some of our Animal Ambassadors. Learn about their personalities, favourite foods, natural habitats, and much more. Free with admission.

PRIVATE ECOTOURS

Book a private three-hour guided tour, for a unique outdoor experience.

We will take you well beyond the limits of our walking trails, providing you with the best opportunity to fully explore the beauty of Wye Marsh.

To book please contact Céleste at cleblanc@wyemarsh.com





WHAT'S HAPPENING AT THE WYE MARSH THIS SUMMER



SUNSET PADDLE

Running Every Friday Starting June 6 - August 29, 2025 | 7:30 - 9:30pm

Members: \$45 per person + HST | Non-Members: \$75 per person + HST

Join us for a peaceful and immersive evening on the water as we paddle through the tranquil marsh at dusk.

This unique program blends gentle physical activity, mindfulness, and nature appreciation, all set against the calming backdrop of a setting sun. Perfect for individuals, couples, or groups, this experience offers the tranquil opportunity to relax, reconnect with nature, and embrace the quiet adventure on the water.

See details at: www.wyemarsh.com/sunset-paddle



SEDGES

June 15, 2025 | 1:30pm - 3:30pm

Sedges: What they reveal about the landscape and WHY We care

Anyone who has done a biological study of the land will know that sedges (grass-like plants) can reveal secrets of the soil. Although they visually blend in with other plants, sedges are beautiful in form and function. And when it comes to 'reading the landscape' sedges can provide you with amazing insights.

See details at: www.wyemarsh.com/sedges



TURTLE ID WORKSHOP

July 13, 2025 | 10:00am - 12:00pm | Members: \$18 per person + HST

Non-Members: \$27 per person + HST

How can you tell a Painted Turtle from a Map Turtle? What's the average lifespan of a Blandings? Do turtles actually "freeze"?

Learn about turtle identification, fun facts, habitat and ongoing conservation efforts in Ontario. During this dynamic two-hour workshop you will:

Hike through the forest and across the berm; Kayak through the marsh; take a "Turtle Tally"; and put your new skills to the test.

Details coming soon at: www.wyemarsh.com/summer-events



BENTHIC BASICS, WATER QUALITY & YOU

August 10, 2025 | 10:00am - 12:00pm | Members: \$18 per person + HST

Non-Members: \$27 per person + HST

What do fortune-tellers and benthic scientists have in common? They can look into murky waters and see the past-present-and future!

Get your hands mucky and have some fun unravelling the mysteries of benthic invertebrates at Wye Marsh. Learn what the little critters living in the deep dark sediments can tell us about the ecosystem's health, water quality, and our place in the Web of Life.

Details coming soon at: www.wyemarsh.com/summer-events



DEADLY OR DELICIOUS?

August 16, 2025 | 10:00am - 12:00pm | Members: \$18 per person + HST

Non-Members: \$27 per person + HST

Ever walk through the forest and wonder which plants are tasty, which ones have healing powers, and which ones are toxic?

Find out the answers when you join us at Wye Marsh to learn about some of the edible, medicinal, and poisonous plants living here. Gain an understanding of how to properly identify these plants, how some can be used beneficially, and the properties that make others harmful. Investigate these plants on a guided hike and create your own mini field guide to take home!

Details coming soon at: www.wyemarsh.com/summer-events



Georgian Bay Garden Tour

**Join us for the 2025
Georgian Bay Garden Tour
on Saturday July 26!**



Whether you are looking for inspiration, gardening tips, or the chance to explore captivating private gardens in the Midland/ Penetanguishene/ Tiny and Tay area, the Georgian Bay Garden Tour makes for a perfect summertime escape!

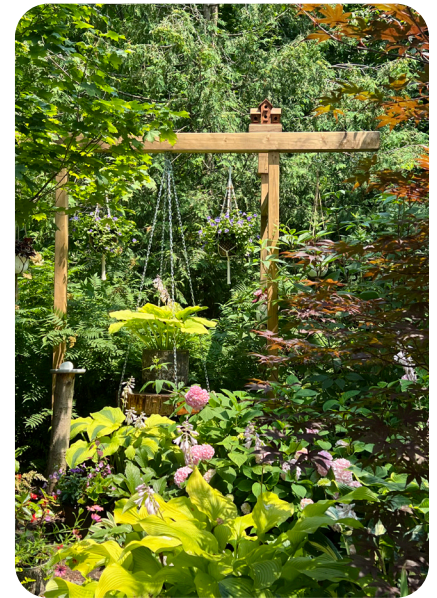
This year's Garden Tour will take place on July 26, from 9:00-4:00 pm, rain or shine. Tickets are \$25 each, and are on sale at Wye Marsh this June and July. The event will highlight creative local gardeners, artisans, a Silent Auction, a Mystery Plant Competition, and the Wye Marsh Wildflower Garden. Proceeds will benefit Friends of Wye Marsh and Hospice Huronia. Last year's tour raised \$13,500.

Artisans

Chat with local artisans and admire their creations at key tour sites: Karen Amos, stained glass; Rachel Gelderbloom, chain mail jewellery; Gerry Kulyk, painter: prints & postcards; Logan's Stone Forge and Ironworks, metal and stone sculpture; Ingrid Lupp, fused glass; John McCallum, bird houses & other creations; and Kai Virkus, pottery.

Silent Auction & Sponsors

Visit Wye Marsh July 18-26 to bid on thousands of dollars worth of prizes. Our artisans and many regional businesses have kindly donated a variety of incredible items to support this worthy fundraising event. Other local businesses have generously donated direct sponsorship funds. These businesses will be acknowledged on the Georgian Bay Garden Tour website and in our ticket brochure; we appreciate your support of their endeavours.



New This Year

Test your plant identification skills and learn fun facts when you take part in our NEW Mystery Plant Competition. This free competition will be taking place in one of the featured gardens bursting with botanical wonders—you could win one of 3 prizes sponsored by Falling Apple Tapestry and Friends of Wye Marsh. First prize is a \$150 plant collection and a family pass to the Wye Marsh. Two runner-up winners will receive \$50 in plant material and a Wye Marsh Family Pass.

Don't miss out on this opportunity to support Hospice Huronia and Friends of Wye Marsh as you enjoy a delightful day in the gardens!



For more information on ticket vendors and updates scan the QR code, visit our website www.gbgardentour.com or Follow us on Facebook





Georgian Bay
Garden Tour

Garden Sat, July 26th 2025 Tour

\$25

Event runs 9AM - 4PM *Rain or Shine!
for a TICKET BROCHURE / MAP & WRIST BAND

* Tickets on sale early June *Wristbands must be worn to access gardens!

Proceeds in support of:



WYE
MARSH



Hospice HURONIA
TOMKINS HOUSE



TICKETS / INFO: www.gbgardentour.com

WYE MARSH TRAILS SYSTEM

16160 Highway 12 East, Tay, ON (705) 526-7809



LEGEND

Hiking Trails	—————	
Boardwalk	- - - - -	
Marsh March	—————	1.9km
(Wheelchair & stroller accessible friendly)		
Hardwood & Return Trail	—————	0.4 km
Muskrat Loop	—————	1.6 km
Woodland Trail	—————	1.5 km
I.D. Trails	- - - - -	0.9 km
Snowshoe Trails	- - - - -	
Service Road	—————	

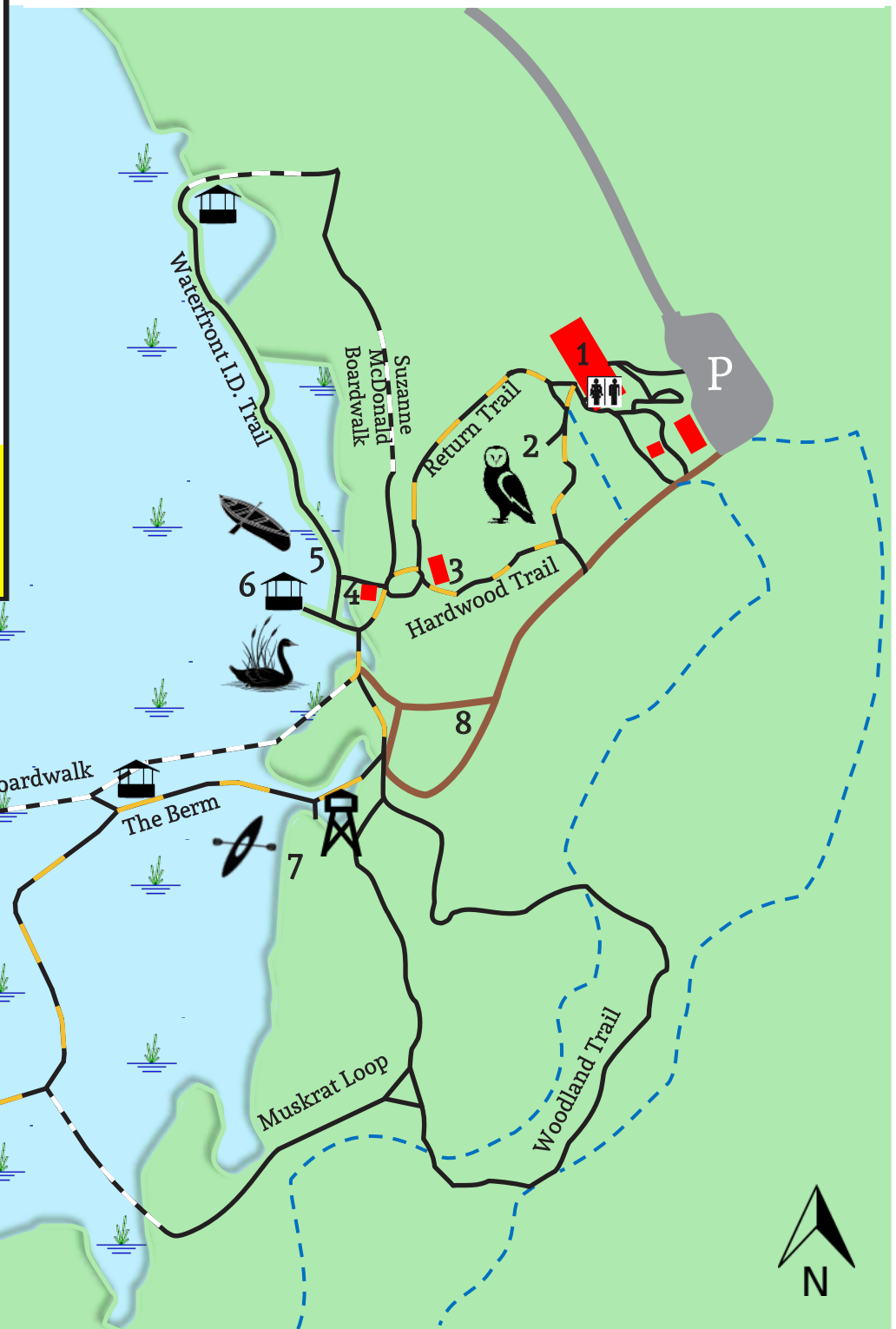
TRAILS CLOSE Nov-April at 4:00 PM
TRAILS CLOSE May-Oct at 4:30 PM

GATES LOCK AT 5:00PM

- 1 Visitor's Centre
- 2 Birds of Prey Field
- 3 Sugar Shack
- 4 Log Cabin
- 5 Canoe Dock
- 6 Waterfowl Monitoring Station
- 7 Kayak Dock
- 8 Tenting Field

- 2 Birds of Prey Field
- 4 Log Cabin
- 6 Waterfowl Monitoring Station
- 8 Tenting Field

	Open Land/Forest
	Wetland
	Building



Please use caution on all trails, walkways, boardwalks, waterways and property of the Wye Marsh. Appropriate hiking footwear is recommended. Slippery conditions exist when wet. Be aware that plant roots and loose rocks can create natural trip hazards when extending above paths. Immediately return to the Visitor's Centre if foul weather occurs.