



Wye Marsh Annual Report 2012

*Our Mission is
"To spark a
commitment to
conserving wetlands,
woodland and
wildlife by creating
educational
opportunities in a
natural setting."*

Wye Marsh Annual Report

January 2013

Who, What, Where, When and How...

What a wonderful year we have had at the Wye Marsh Wildlife Centre. With the completion of our Bird Building—allowing us to bring our birds home—and the success of our events—we are a fortunate organization. **Who** can we attribute this success to? Our members, volunteers, donors, board of directors and staff!

It is amazing **where** we have been able to go—we have had some struggles with finding the right balance of our revenue and expenses and the board of directors has worked very hard to align our expenses to be balanced within our means. Leading into 2013 we will work very hard to keep our revenue strains strong. We have plans to upgrade our residential and day camp facilities and we are looking forward to updating our exhibit hall area to include some travelling displays to help peak interest in different aspects of marsh ecosystems and conservation efforts around the world.

We've discovered that **when** there is vested interest and passion in an organization and the mission that they aim to achieve the community will provide their support! In order to reflect on our actions we sometimes sit back and wonder **how** it is that we have managed to accomplish so much and where we would be if it were not for the dedication and passion of many varied stakeholders (including our members, volunteers, donors, board of directors and staff) over the years. Thank you all for your ongoing support of the Wye Marsh - We look forward to continuing to work with you in 2013!



How do we manage our upkeep...

As usual our Maintenance department, led by Paul Beauchamp, Maintenance Manager has been working hard to keep our grounds “ship shape”. This years projects and accomplishments included:

- Trail maintenance: including the replacement of several bridges along our ski trails (especially in the really wet sections) and the trimming back of leaf and branch growth over our driveway and trail system.
- Our partnership with Penetang Secondary School Outdoor Education Leadership Program students assisted us in painting our bunkhouses, pavilion and some picnic tables.
- We began a long overdue bench inventory project which involved the removal of benches which were deemed unsafe and the placement of some new benches.
- The swan treatment centre has received a face lift inside in order to make it more accessible for our volunteers and to keep the corn and duck pellet (swan food) closer to the swans—moving into 2013 the swan treatment centre is set to get a new roof, a re-designed feeding area and some new bubblers.

The Maintenance department has lots of plans for 2013 including the replacement of some of our docks and sheds (funded by the Helen McCrea Peacock Foundation) and some upgrades/modifications to the bunk beds in our bunkhouses.



What is the Wye Marsh and what do we do...

Wye Marsh, and its interpretive centre, sits on a 3,000-acre wildlife area situated in an environmentally endowed location in Southern Georgian Bay. Wye Marsh has stewardship responsibility for this property that is anchored by its interpretive centre. It is committed to connecting people to nature and promoting an understanding of the vital role wetlands play within the environment. The Friends of the Wye Marsh are committed to conserving the Wye Marsh and the natural heritage of the Wye Valley while providing low impact educational, recreational and research opportunities benefiting present and future generations.

This year-round facility provides educational programs and excursions, maintains a 30km trail system, and a multitude of canoe channels. It acts as protector for an Important Bird Area (IBA) and a breeding ground for Species at Risk: including Blanding’s Turtles, Least Bittern, Black Terns and the famous Trumpeter Swans. Wye Marsh is also designated an Area of National Scientific Interest (ANSI).

The Wye Marsh Wildlife Centre was opened in 1969 as a nature reserve operated by Environment Canada. In 1985 the federal government withdrew and turned operations over to The Friends of the Wye Marsh. The Wye Marsh Wildlife Centre has since been run as a registered non-profit.

Wye Marsh is very proud to be situated on a National Wildlife Area. This means that this ecosystem has been designated as nationally significant.



Where has the Program and Revenue Generation Committee led us...

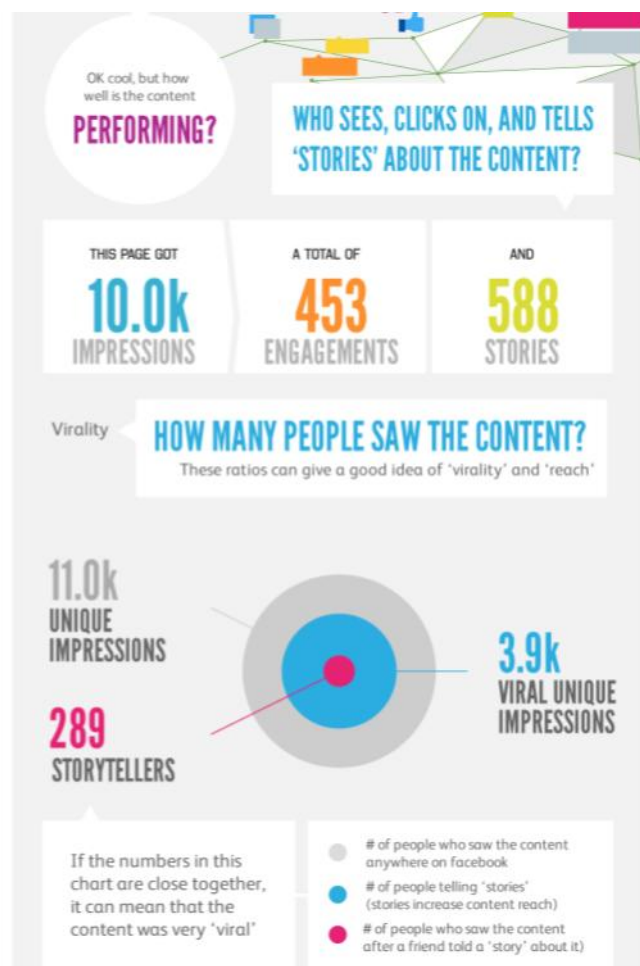
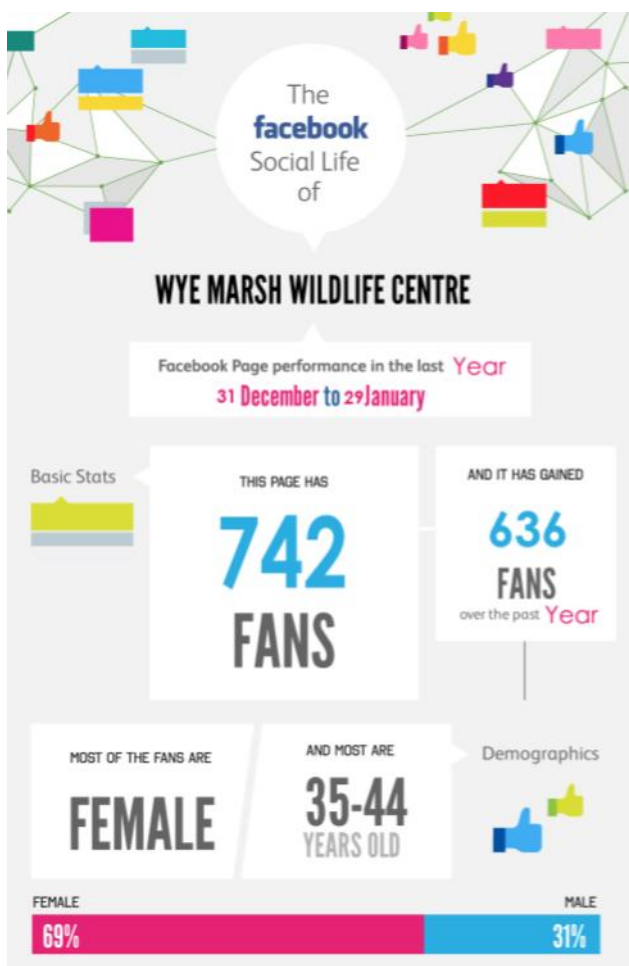
In 2012, the Program and Revenue Generation Committee began the task of rebuilding our relationships with our supporters. Those included our members and our donors as well as visitors. Without these folks, the Marsh would be unable to provide the high level of programming that you see today.

The Staff conducted a program audit to determine those programs that best addressed the Mission of the Wye and reflected the best education values. The Membership program was also reviewed to determine that what we are offering to our members is valued and will encourage additional members. In 2013 the audit of both of these areas will continue so that we are always current.

The Marsh also reached out to our supporters to ask for their help in building our new home for the birds of prey, to support the summer camp for children who might not have been able to attend and most recently, for our Winter Wonderland project. Our donors responded very generously and gave us the ability to complete these projects. We are very grateful for the support.

From a marketing perspective, the Georgian College Marketing students completed a review of the marketing opportunities available for the Marsh and provided a report to assist us in developing our program. 2012 saw our Marketing staff leave us and we are currently looking for her replacement. This is a critical area that we will continue to provide a focus.

2013 will see us build on the past year and seek further support for the programs and activities that make the Wye Marsh the unique place that it is.





Birds of Prey

With the construction of our new Birds of Prey building in 2012, maintenance and care for our raptors has made our work trouble-free. Access to water and hydro has helped animal care staff to work efficiently and helped keep our Birds of Prey area well cared for. It has eliminated many hours of labour and gave us more time to focus on creating a more visually appealing birds of prey flight area. Our visitors can now comfortably experience an hour birds of prey presentation on bleachers put together by Wye Marsh volunteers.



We've also had the opportunity to display our raptors to many excited photography enthusiasts. Several photography groups and clubs visited our facilities and had the chance to photograph our birds during an outdoor flight demonstration.

Our Birds of Prey have become quite the attraction here at the Wye Marsh, especially our 1pm Sunday presentations, and we are focusing on ways to better ourselves every day. Plans for an outdoor viewing area started in 2012 and is our main goal to complete for 2013. As one of the care takers of birds of prey I am looking forward to another successful year and looking forward to seeing additional change in our facilities to improve our futures.

Reptiles and Amphibians

Our live reptiles and amphibians in the display hall always attract our visitors. Saturday's "Wet n' Scaly" presentations are enjoyed by all and our Junior Naturalist volunteers get hands on experience caring for our scaled critters. 2012 brought us motivation to better our facility and a brain storming session among staff enabled us to see into the future and to make plans for a better display area. Among some of those plans are to eliminate the old carpet, move the swan display and to replace it with a fresh new display that will be versatile to our changing seasons.



Honey Bees

In 2010 the discovery of foul brood and mites invaded our hives, the success of our bees deteriorated and perished. Very little of our equipment was salvageable and with always changing staff, there wasn't anyone to care for the program. In 2011 the bee house and observation hive in the display hall was left without the sounds of buzzing bees but 2012 brought change to our honey bee colony, with 4 brand new hives and donated equipment, the honey bee program was back on track.

It was an exciting and busy year with the honey bees, the "honey house" received a new coat of yellow paint, and our apiarist caught a lost swarm in a Midland resident backyard. Wednesday Honey Bee presentations during summer programming proved to be quite the attraction among visitors young and old and to end a "buzzy" season, fall harvest gave the Wye Marsh 180 pounds of golden honey.

Everyone at the Wye Marsh are looking forward to another year with the honey bees and hope 2013 is even more successful than 2012.

Where has conservation of the marsh led us this year...

McMaster University completed additional research again this summer and we look forward to sharing the results of their studies with you! This research is overseen by Dr Pat Chou Fraser who has been the leading researcher on wetlands within Georgian Bay.

This year we have had a few lead poisoning cases within Trumpeter Swans. This is likely due to lower than average water levels which have provided the Swans with access to different areas of the substrate within their usual habitats and this has increased the risk of obtaining sources of lead. Swans will eat rocks and pebbles in order to help them digest their food and a piece of lead is very similar to a rock. Once this piece of lead is in the digestive system the Swan continues to slowly digest the lead - symptoms of lead poisoning can take time to present visibly. Unfortunately in the cases this past year the Swans succumbed to their exposure. Wye Marsh does their best to attend as many calls that we get with regards to sick or injured swans and your ongoing support is what makes our efforts possible.

Balance Sheet

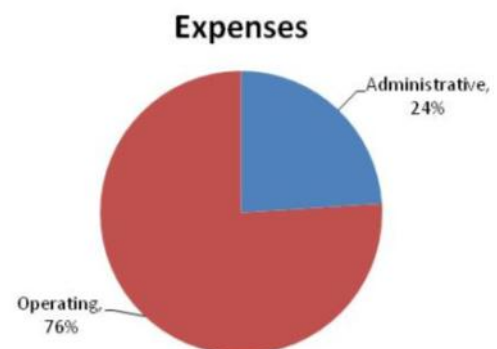
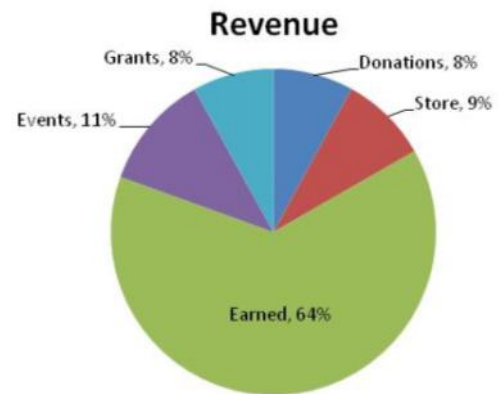
As at October 31, 2012

ASSETS	2012	2011
Current	\$ 135,933	\$ 143,844
Capital Assets (NBV)	261,508	260,737
Long Term Investments	625,580	625,580
Total Assets	\$ 853,963	\$1,030,161
LIABILITIES	2012	2011
Current	\$ 126,270	\$ 149,506
Long term	183,399	198,281
Total Liabilities	309,669	347,787
NET ASSETS	544,294	682,374
Total Liabilities & Net Assets	\$ 853,963	\$1,030,161

Statement of Operations

Year ended October 31, 2012

Revenue	2012	2011
General Admissions & Membership	\$ 113,210	\$ 139,884
Educational & Recreational Programs	163,102	192,885
Store Operations	50,369	50,674
Fundraising Events/Programs	65,917	73,775
Donations/Planned Gifts	45,807	292,462
Grants	46,208	53,645
Amortization of Deferred Contributions	39,900	137,609
Total Revenue	\$ 575,201	\$ 973,513
Expenses	2012	2011
Operating	\$ 542,235	\$ 713,766
Administrative	171,046	201,911
Total Expenses	\$ 713,281	\$ 915,677
Excess of Revenue over Expenses for the Year	\$ (138,080)	\$ 57,836



Friends of Wye Marsh Board of Directors

For Year Ended October 31, 2012

President Dr Mike Rigglin
 Treasurer Barry Bergey
 Past President Colin Harper

Directors:
 Vern Cottrell Maura Lendon
 Heather Eland Rob Thompson
 Ed Hartley Petra Ott
 Elizabeth Phillips

The Balance Sheet and Statement of Operations have been extracted from the Friends of Wye Marsh audited financial statement as at and for the year ending October 31, 2012. The financial statements were audited by Brabant & Kretzshmann, Chartered Accountants. The complete financial statements and auditors report are available through the Wye Marsh at 705-526-7809, ext 201.

“The breeze, the trees and the honey bees—All volunteers!”

Juliet Carinreap

Who's been helping us along the way...

In this past year our dedicated volunteers have shared with us approximately **9500** hours. This has resulted in a cost savings of approximately \$118,750 (based on the average wage of these positions). The Wye Marsh benefits daily from the generosity of volunteers. Our ability to reach a large group of individuals through our educational programs is only possible through the volunteers that teach them, ensure the safety of the building, greet them at the front desk, make supplies, aid in the administrative duties that follow and complete all supporting tasks that are needed to share the Marsh with visitors.

The Christmas fundraising events were a great success. Our corporate sponsors allowed our volunteers to show off their wrapping talents once again. Generous donations from Mountainview Mall, Franke Kindred and Root Cellar Signs helped cover our expenses. Pam Higgins donated a great deal of her time to ensure that the book "The Birds of Georgian Bay" could be viewed as a legacy. Once Again, Beryl Loxley headed up the massive undertaking of moving the Wye Marsh Memories gift shop to the Mountainview Mall along with our very own Cathy Lewis.

The Wye Marsh would like to welcome all new volunteers that have joined us on our journey. It is exciting to see that there is an interest in our growth from our community. This unique learning facility stands here today and will continue to thrive in the future because of our community's dedication.



Sweetwater Harvest Festival was again a success! Thanks go out to all who donated their time to help us pull off our biggest event without any hiccups!

Wye Marsh Staff

Paul Beauchamp,
Maintenance Manager

Andreia DaSilva,
Project Coordinator

Denise DeVillers,
Animal Care Technician

Pamela Higgins,
Social Marketing Coordinator Volunteer

Cathy Lewis,
Visitor Services Coordinator

Beryl Loxley,
Store Manager Volunteer

Mike Majury,
Captive Wildlife Care Technician

Sonya Stemerding,
Education & Program Coordinator

Sara Street,
Executive Director



Group of Students from James Madison University were here for their alternative Spring Break. They helped us re-paint our classroom! Thank you!

WYE MARSH



16160 Highway 12
P.O. Box 100
Midland ON
L4R 4K6

Phone: 705-526-7809
Fax: 705-526-3294

E-mail: info@wyemarsh.com
www.wyemarsh.com